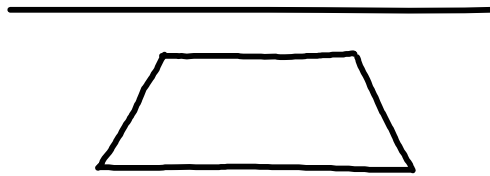


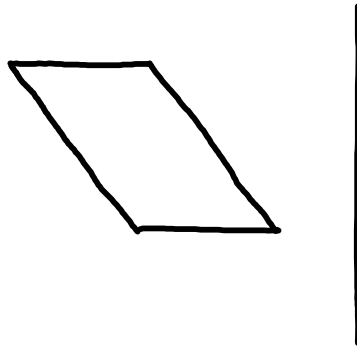
1. 8.5 units

2. **Isometry** is a transformation with congruent segments

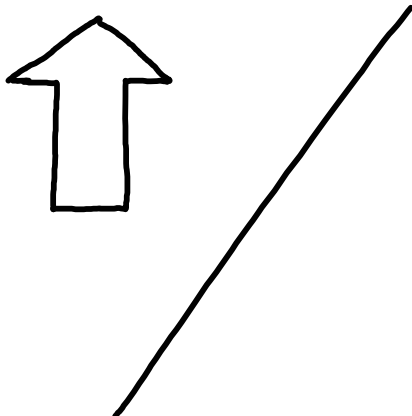
3.



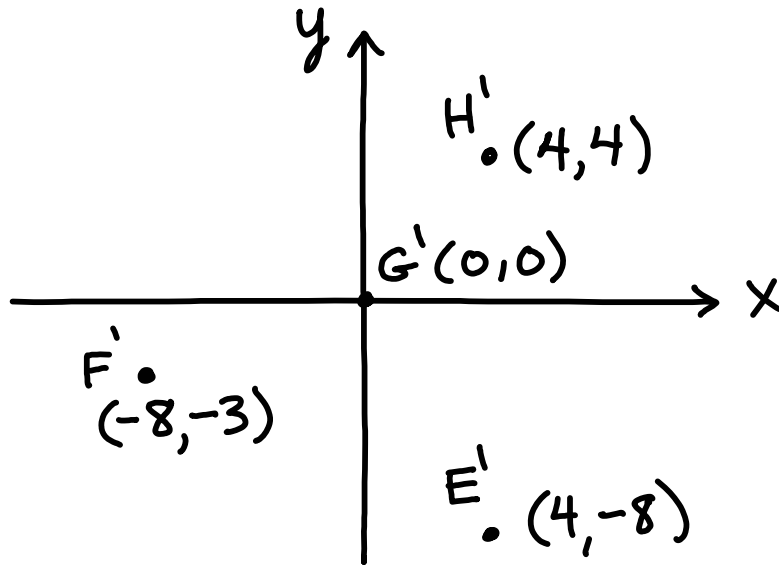
4.



5.



6.



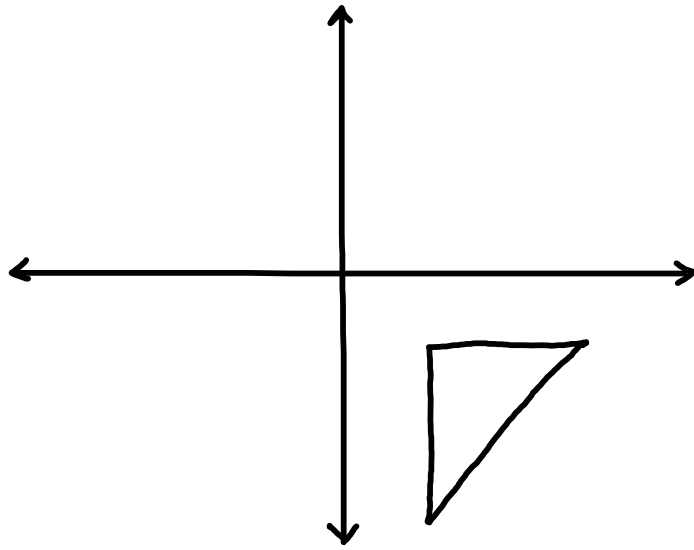
7. clockwise or counterclockwise

8. $(-2,-8)$

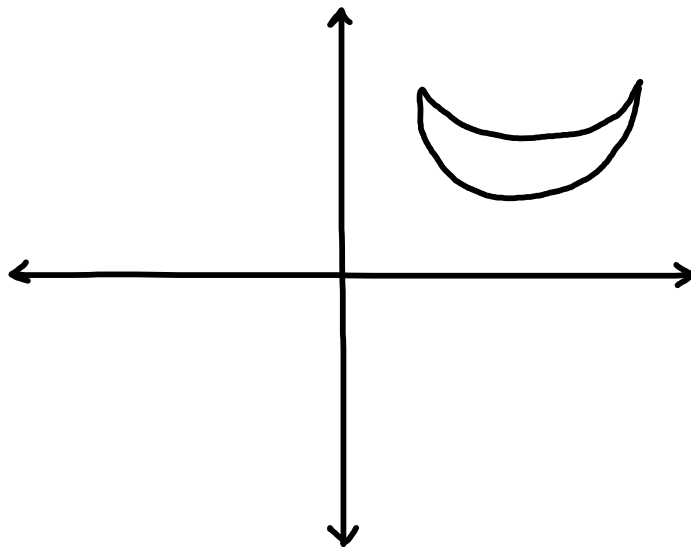
$$180^\circ \text{ ROTATION } R_0(x, y) \rightarrow (-x, -y)$$

$$R_0(2, 8) \rightarrow (-2, -8)$$

9.



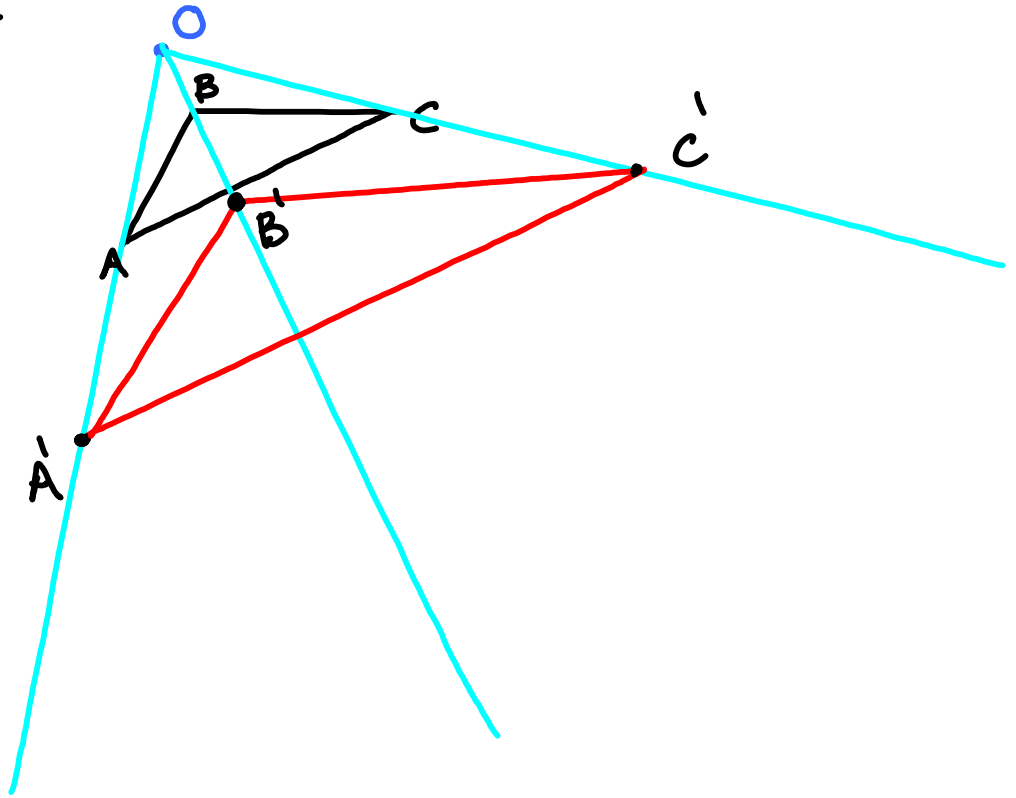
10.



11. similar

12. greater than 1

13. $D_0, 2$



14. $(10, -4)$

$$T: (x, y) \rightarrow (x+7, y-14)$$

$$T: (3, 10) \rightarrow (3+7, 10-14)$$

$$T: (3, 10) \rightarrow (10, -4)$$

15.

