

# Inscribed Angles

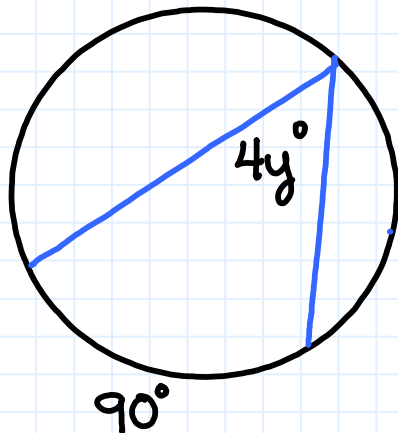
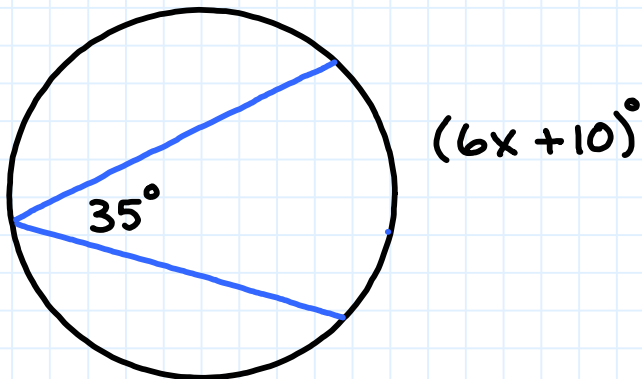


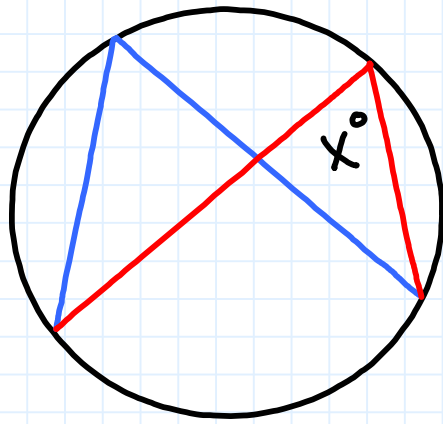
## Overview of problems



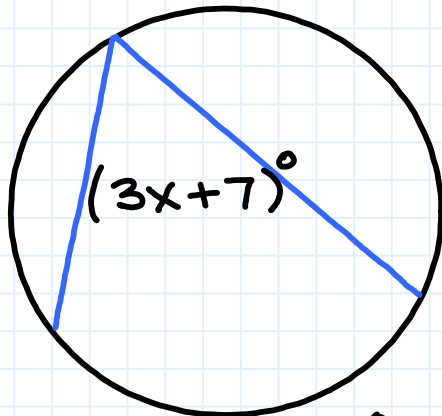
Example Set: A

Find the value of the variable





$60^\circ$

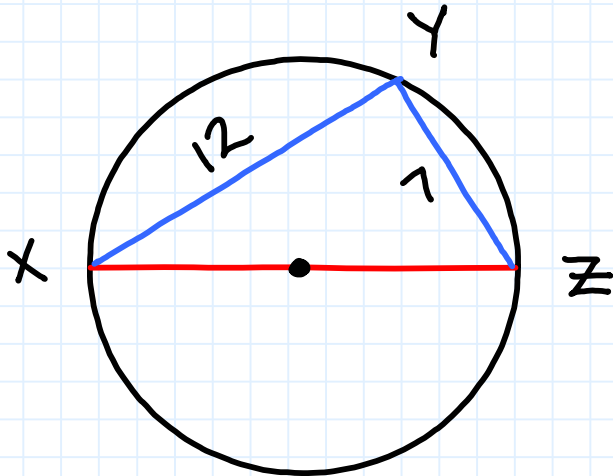


$(9x - 1)^\circ$



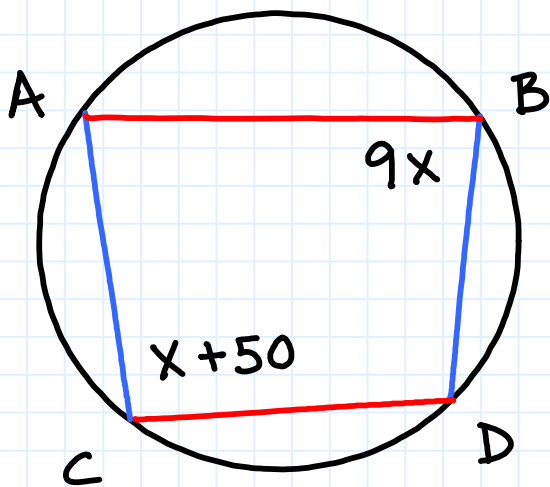
## Example Set: B

Answer the following questions:



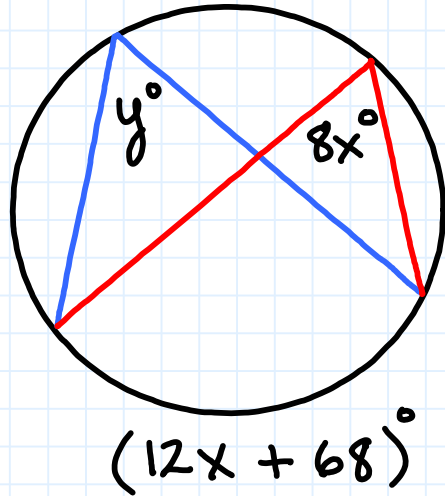
$\overline{XZ}$  is a diameter

Find the radius



ABDC is a quadrilateral

Find the value of  $x$

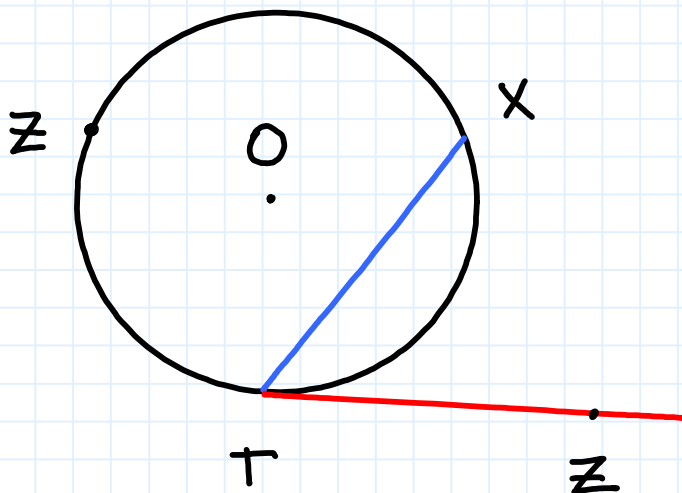


Find the value of  $x$  and  $y$



Example Set: C

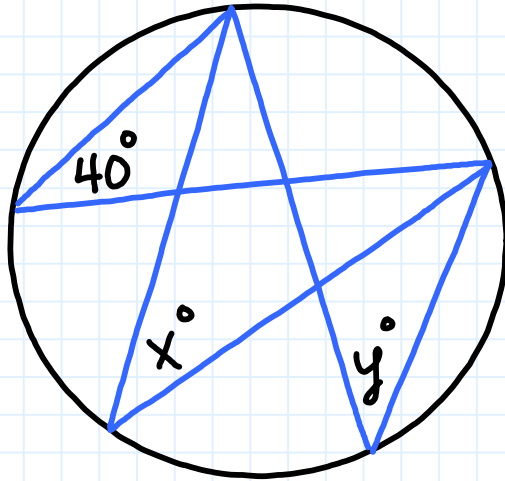
Answer the following questions:



$$m\widehat{XZT} = 260^\circ$$

TZ is tangent to circle O.

Find  $m\angle XTZ$



Find the value  
of  $x$  and  $y$

# Inscribed Angles

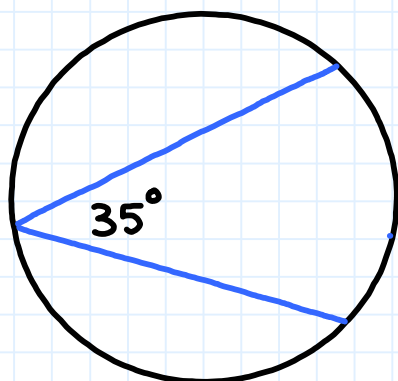


## Overview of problems- KEY



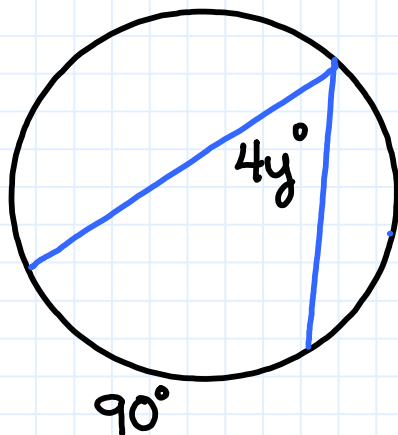
Example Set: A

Find the value of the variable

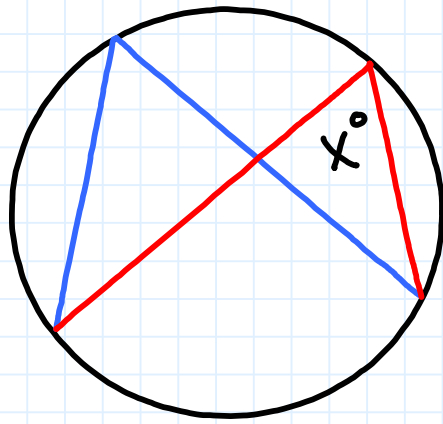


$$(6x + 10)^\circ$$

$$x = 10$$

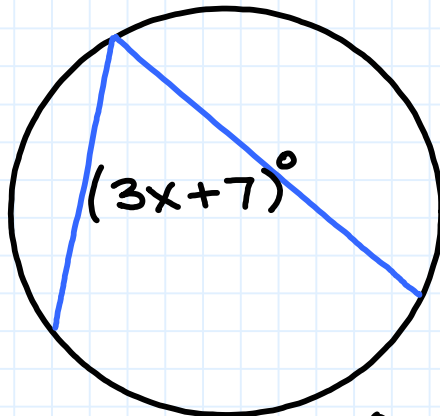


$$y = 11.25$$



$$x = 30^\circ$$

$$60^\circ$$



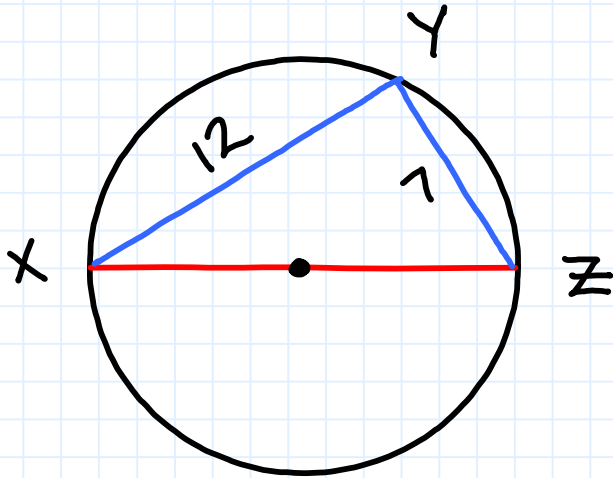
$$x = 5$$

$$(9x - 1)^\circ$$



## Example Set: B

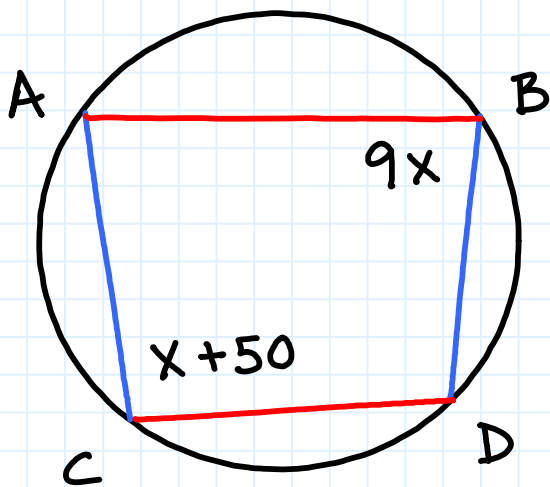
Answer the following questions:



$\overline{XZ}$  is a diameter

Find the radius

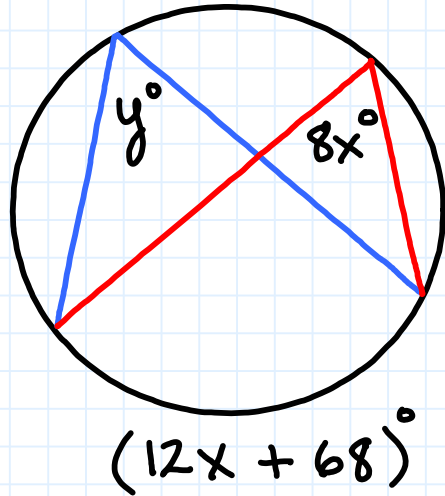
$$6.94$$



ABDC is a quadrilateral

Find the value of  $x$

$$x = 13$$



Find the value of  $x$  and  $y$

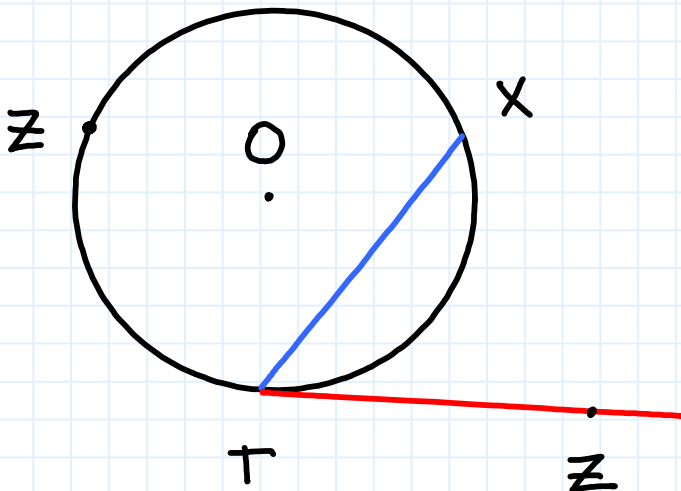
$$x = 17$$

$$y = 136$$



Example Set: C

Answer the following questions:

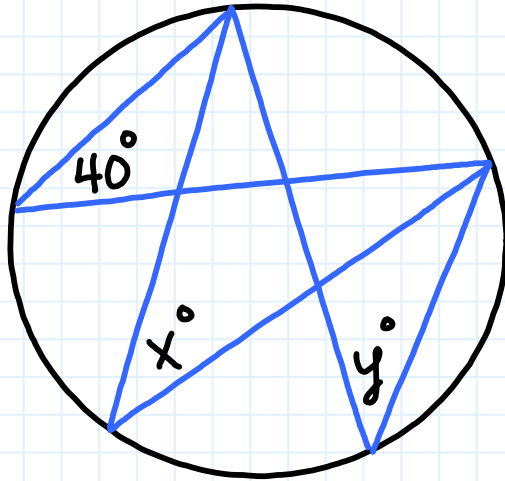


$$m\widehat{XZT} = 260^\circ$$

TZ is tangent to circle O.

Find  $m\angle XTZ$

$$50^\circ$$



Find the value  
of  $x$  and  $y$

$$x = 40^\circ$$

$$y = 40^\circ$$