

Graphing Quadratic Inequalities



Overview of problems



Example Set: A

Determine if the point is a solution to the quadratic inequality

$$y \leq 3x^2 - x + 5, \quad (2, 7)$$

$$y > -x^2 + 10x - 6, \quad (-1, 5)$$

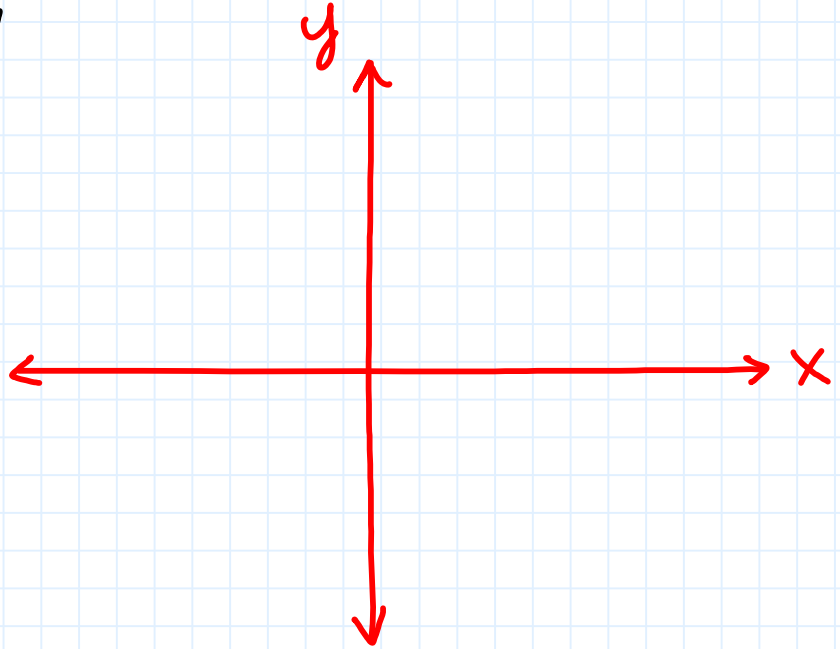
$$y < 2x^2 + 17x + 9, \quad (2, 34)$$



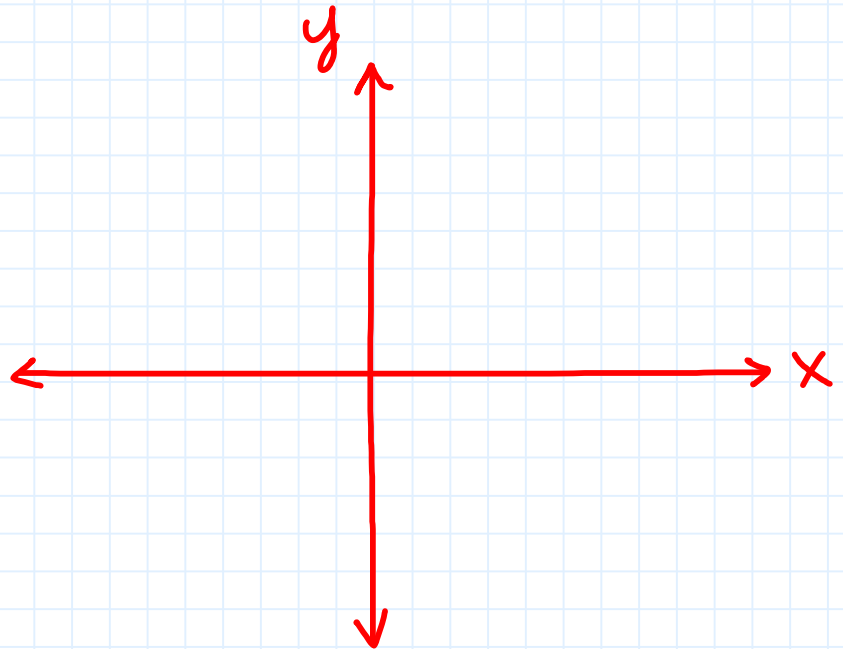
Example Set: B

Graph the quadratic inequality

$$y < 2x^2 - 8x + 1$$



$$y \geq -5x^2 + 10x - 2$$

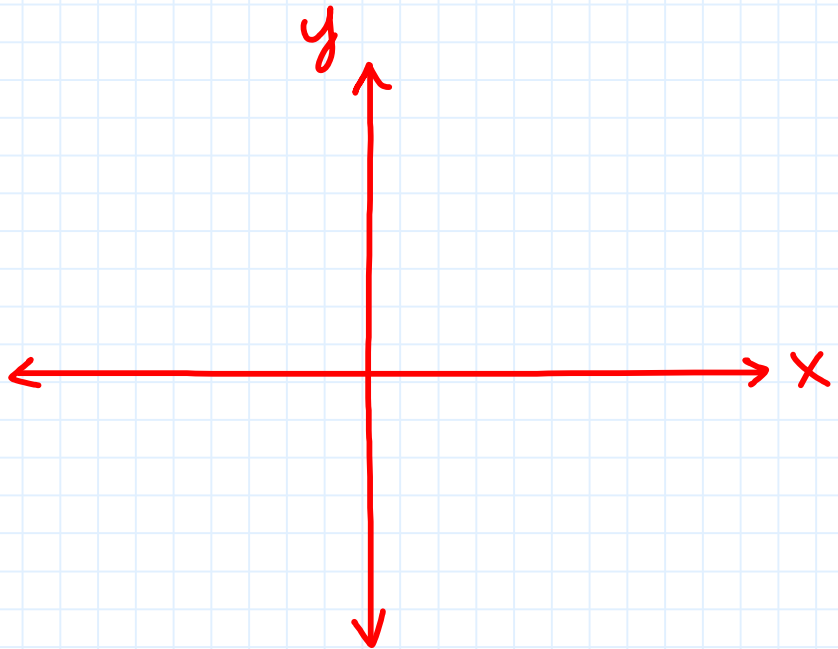




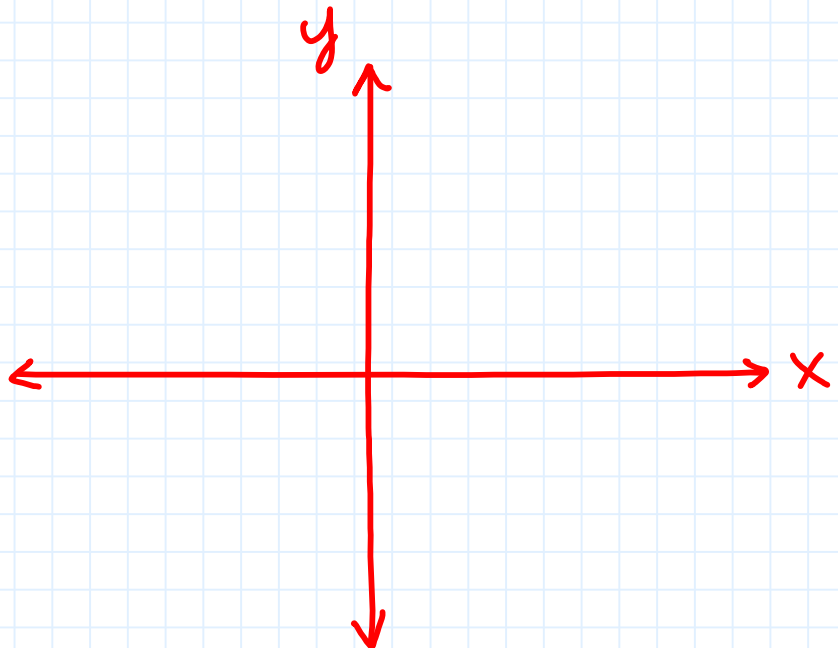
Example Set: C

Graph the quadratic inequality

$$y \geq 4x^2 - 7$$



$$y < 2x^2 + 8x + 6$$



Graphing Quadratic Inequalities



Overview of problems- KEY



Example Set: A

Determine if the point is a solution to the quadratic inequality

$$y \leq 3x^2 - x + 5, \quad (2, 7) \quad \text{Solution}$$

$$y > -x^2 + 10x - 6, \quad (-1, 5) \quad \text{Solution}$$

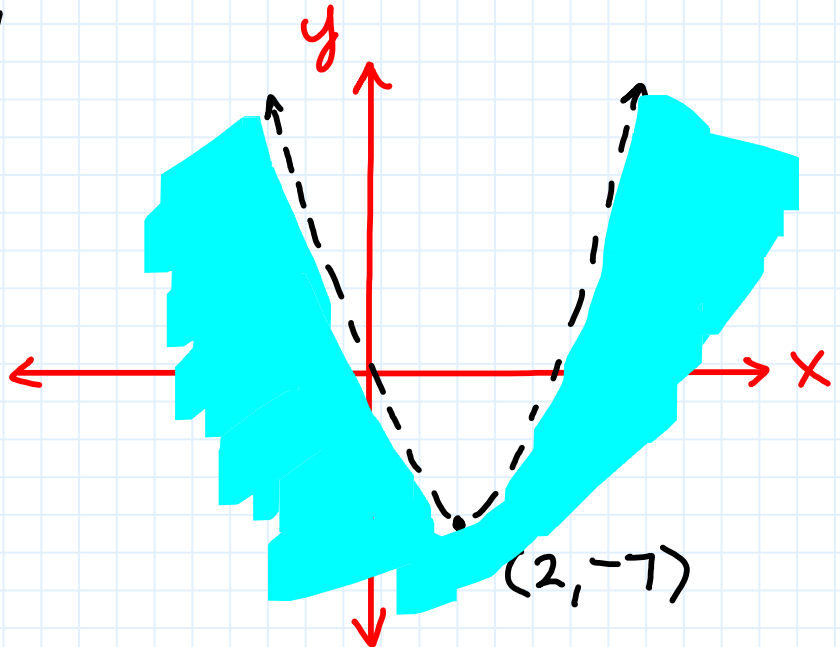
$$y < 2x^2 + 17x + 9, \quad (2, 34) \quad \text{Solution}$$



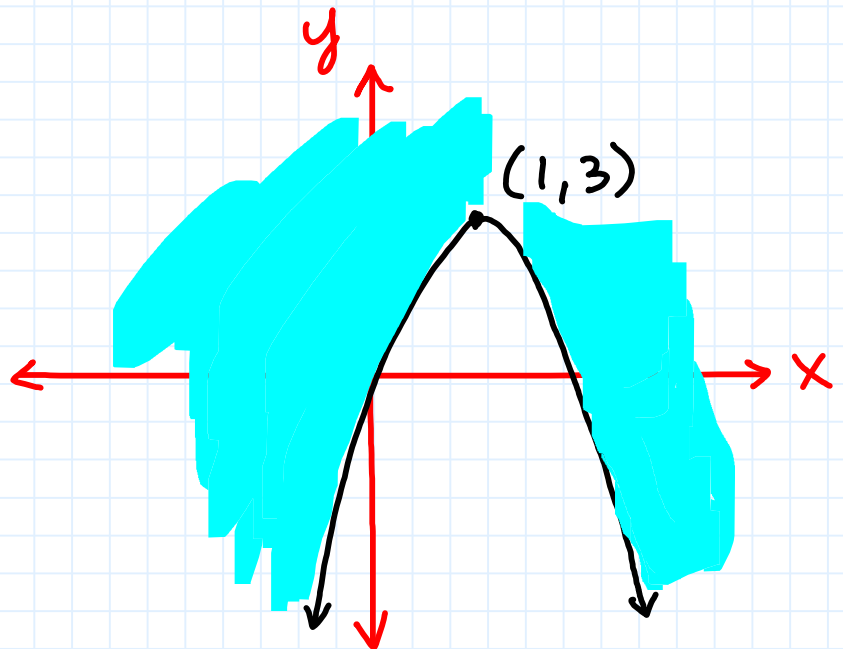
Example Set: B

Graph the quadratic inequality

$$y < 2x^2 - 8x + 1$$



$$y \geq -5x^2 + 10x - 2$$

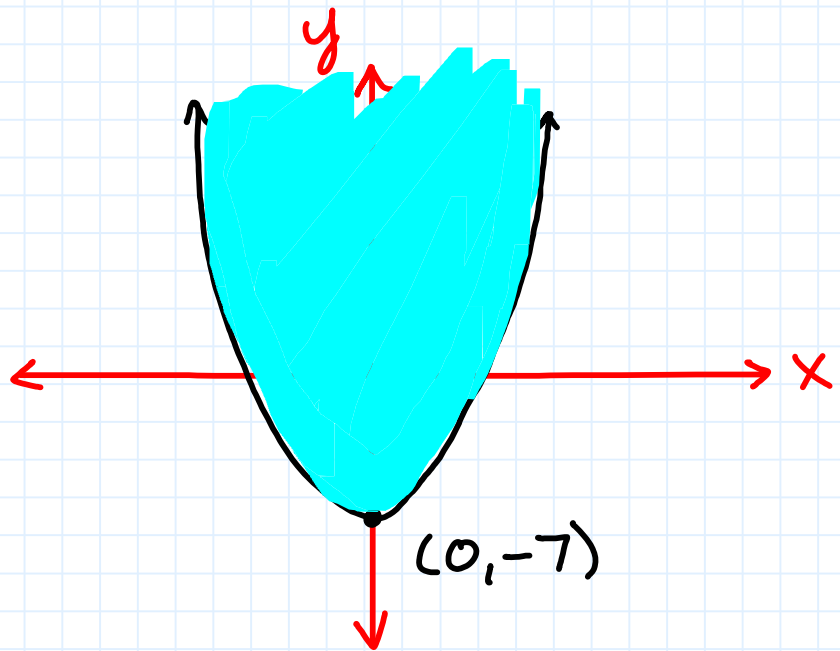




Example Set: C

Graph the quadratic inequality

$$y \geq 4x^2 - 7$$



$$y < 2x^2 + 8x + 6$$

